

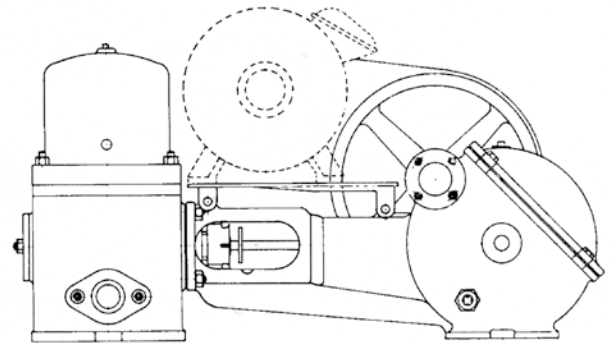
BC PISTON PUMPS

PRODUCT INFORMATION

TYPE BC-T

Type BC-T pumps are electrically operated, double-acting piston feed pumps fitted with precise gearing. The pumps run smoothly and quietly. Areas of application are boiler feeded, pressure tanks, draining and water supply. The materials used are cast iron, stainless steel and bronze.

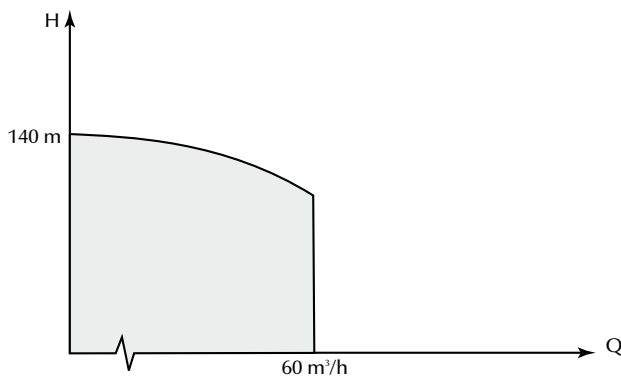
| | |
|---------------|---------------------------|
| Q: | max. 60 m ³ /h |
| H: | max. 140 mWc |
| Temp.: | max 100°C |
| DN: | 25 – 100 |



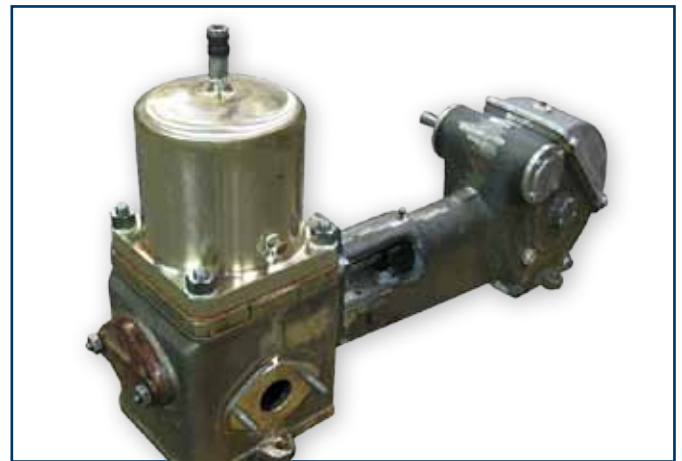
TYPE BC-T

Available in 6 construction sizes:

Type T2, T4, T5, T5a, T6 og T6a



*Indicative curve.
We tailor our pumps to your needs.
Contact us to hear more.*

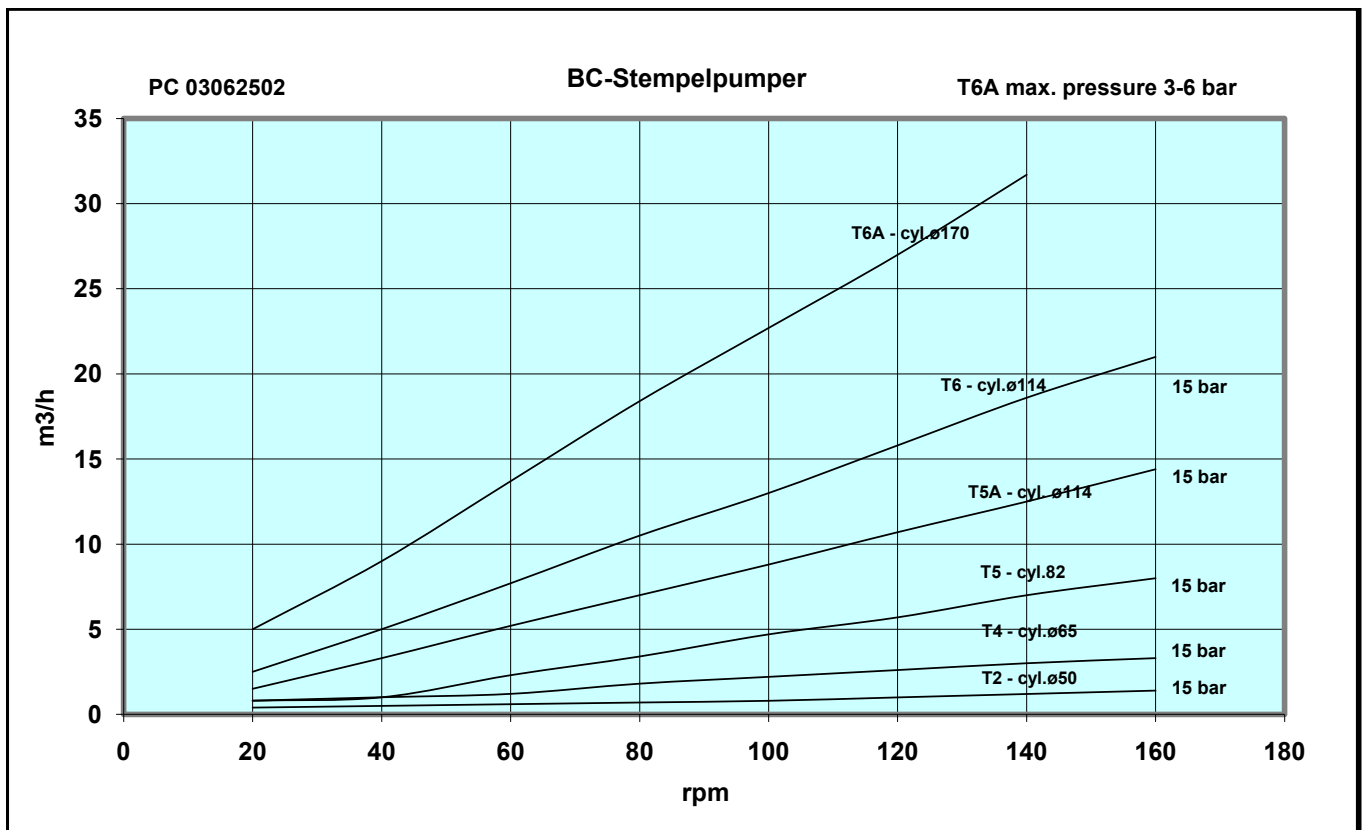


For further information please contact us – or visit our website at www.trium.dk

TRIUM / B. Christensen Maskinfabrik Eftf. ApS / Pumps and Marine Services
Linåvej 9F | Hårup | DK-8600 Silkeborg | Tel +45 86 28 04 00 | Fax +45 86 28 04 89 | post@trium.dk

BC PISTON PUMPS

PRODUCT INFORMATION



| Type T2, T4, T5, T6, T6a | | | | | | | |
|--------------------------|-------------------|-------------------|-------------------|-------------------|-------------------|-------------------|-------------------|
| rpm | m ³ /h | m ³ /h | m ³ /h | m ³ /h | m ³ /h | m ³ /h | m ³ /h |
| 160 | 1,4 | 3,3 | 8 | 14,4 | 21 | | |
| 140 | 1,2 | 3 | 7 | 12,5 | 18,6 | 31,7 | |
| 120 | 1 | 2,6 | 5,7 | 10,7 | 15,8 | 27 | 37,5 |
| 100 | 0,8 | 2,2 | 4,7 | 8,8 | 13 | 22,7 | 31,5 |
| 80 | 0,7 | 1,8 | 3,4 | 7 | 10,5 | 18,4 | 25,3 |
| 60 | 0,6 | 1,2 | 2,3 | 5,2 | 7,7 | 13,7 | 19 |
| 40 | 0,5 | 1 | 1 | 3,3 | 5 | 9 | 13 |
| 20 | 0,4 | 0,8 | 0,8 | 1,5 | 2,5 | 5 | 6,5 |



For further information please contact us – or visit our website at www.trium.dk

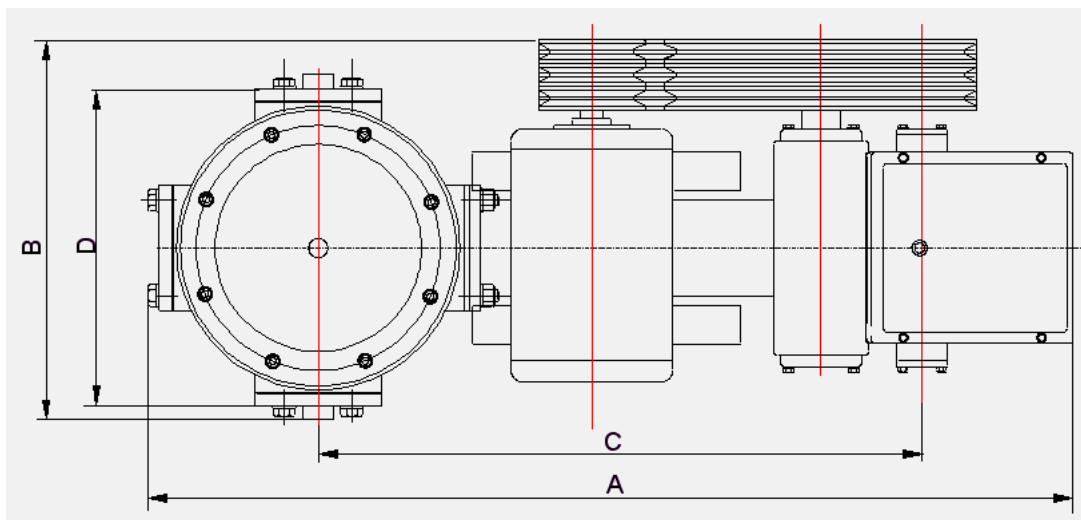
TRIUM / B. Christensen Maskinfabrik Eftf. ApS / Pumps and Marine Services
 Linåvej 9F | Hårup | DK-8600 Silkeborg | Tel +45 86 28 04 00 | Fax +45 86 28 04 89 | post@trium.dk

Danish Quality 

BC PISTON PUMPS

PRODUCT INFORMATION

TECHNICAL SPECIFICATIONS



| Type | Cyl. | Length of stroke mm | Suction and pressure connection | Total length A mm | Total height H mm | Total width B mm | C mm | D mm | E mm | Weight excl. motor kg |
|------|------|---------------------|---------------------------------|-------------------|-------------------|------------------|------|------|------|-----------------------|
| T2 | □ | 40 | 1"PT | 600 | 340 | 240 | 395 | 185 | 112 | 45 |
| T4 | □ | 65 | 1 1/4" PT | 900 | 475 | 325 | 585 | 220 | 175 | 100 |
| T5 | ∅ | 80 | ∅50 | 1230 | 650 | 440 | 820 | 420 | 210 | 280 |
| T5a | ∅ | 115 | ∅50 | 1330 | 870 | 500 | 820 | 475 | 210 | 350 |
| T6 | ∅ | 115 | ∅50 | 1500 | 870 | 550 | 980 | 475 | 270 | 400 |
| T6a | ∅ | 170 | ∅80 ∅100 | 1500 | 870 | 550 | 980 | 475 | 270 | 470 |

UPON REQUEST

To allow us to offer the optimum pump solution, please list the following in your request:

1. Pump capacity
2. Manometric head
3. Static pressure at the pump
4. Liquid specification, including: temperature, density, viscosity, steam pressure, corrosion properties, and solid particle content.
5. Special materials required.
6. Power supply voltage and frequency.
7. Special requests in terms of drive device.



For further information please contact us – or visit our website at www.trium.dk

TRIUM / B. Christensen Maskinfabrik Eftf. ApS / Pumps and Marine Services
 Linåvej 9F | Hårup | DK-8600 Silkeborg | Tel +45 86 28 04 00 | Fax +45 86 28 04 89 | post@trium.dk